

transfusion process steps:

**Patient Identification**

**Sample Identification**

**Blood Bank Component**

**Blood Unit Issue**

**Recipient Verification**

**System Basics**

- Accommodates patient information via handwriting or pre-printed label
- Large, legible unique identifier (BBID: Blood Bank ID or armband number) in barcode and alphanumeric format
- Protects BBID and applied patient information in the adhesive lined pocket
- Snap closure, low profile
- Fits most patient sizes
- Compatible with R3 Attachment System to relocate, resize or replace on patient

- Specimen label attached to patient at time of draw, physically linking patient and specimen
- Additional specimen label (on form) accommodates 2 specimen draws

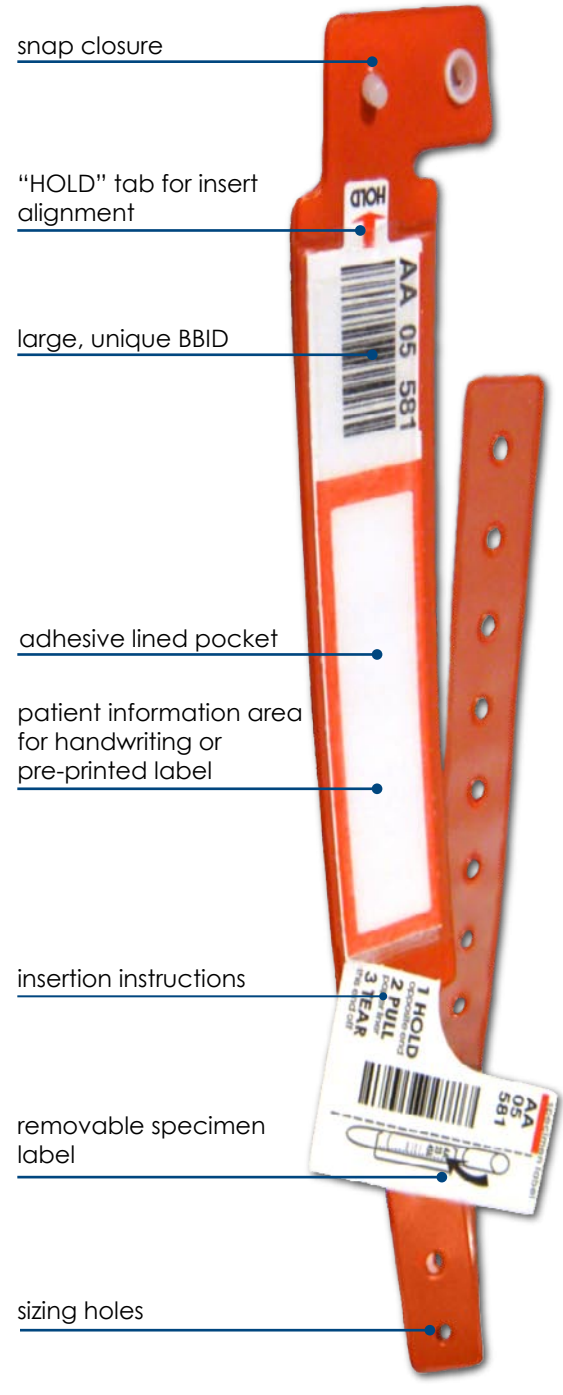
- Unique BBID barcode on specimen tube sticker can be scanned into any LIS that can scan GS1-128 linear barcodes
- 3 detachable BBID stickers are available for paperwork, transfusion tags, or donor unit labels

- Form can be stored in blood bank for quick reference
- No removable BBID stickers left on patient
- Label donor units with unique BBID printed on transfusion tags from LIS or with unique BBID stickers from Condensed form

- Ensure unique BBID matches on the recipient blood band, donor unit tags, and any paperwork at the recipient bedside

- **Highlights:** Adhesive lined pocket; Accommodates electronically based transfusion processes
- **BBID Longevity:** One or more pre-transfusion specimens
- **Durability:** ≥ 7 days
- **Technology:** GS1-128 barcode (custom available)
- **Indications:** In-patient and Out-patient use
- **Packaging:** Forms - 100 forms/pack, Bands - 200 bands/case

recipient verification system parts:



**Shown here:** Red Band with Insert from Condensed form. See reverse side for additional product details and ordering information.

Enable your unique transfusion process with a Typenex recipient verification solution. Contact us for more information.

**Phone: 866 897 3639**  
**Fax : 866 897 3630**

[www.typenex.com](http://www.typenex.com)

## Condensed Form



- positive patient identification area
- patient information area for labels or handwritten information
- large, legible BBID

- additional unique BBID specimen label
- provides instructions for proper overlabeling on specimen

full directions for use on the back of every form

flexiBLOOD product information area

- donor unit & form labels
- 3 detachable, unique BBID stickers for donor unit labels, paperwork, or transfusion tags

- unique BBID specimen label
- physically linked to patient when drawn
- provides instructions for proper overlabeling on specimen tube

forms available in these formats:

- FLX 001** **General\***
  - FLX 002** **Condensed\***
- \*Contact Typenex for additional colors and format options

- insert (for band)
- large, unique BBID provided
- ample space for handwritten or pre-printed patient information
- provides instructions for inserting into flexiBLOOD bands

## flexiBLOOD Band

band is available in these colors:

- FLX 999** **RED**
- FLX 998** **CLEAR**

- button-snap closure
- low profile
- easy application

- adhesive-lined pocket
- maximum protection of BBID and insert information

paper liner with pulling instruction

- sizing holes
- fits most patient sizes

