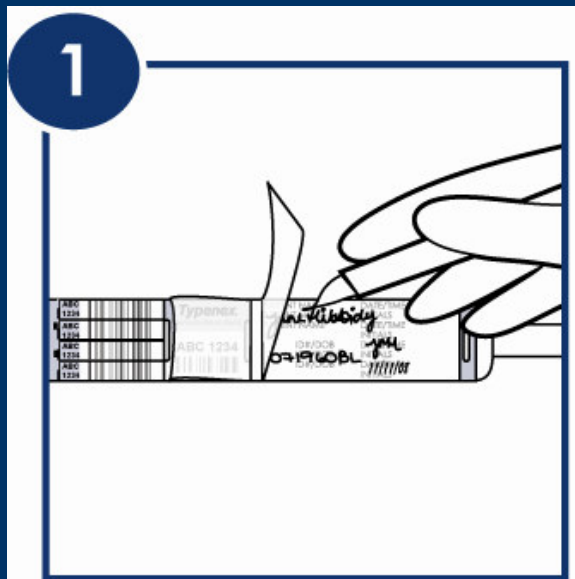


Typenex Medical

Next Generation Barcode Blood Band
Training Guide

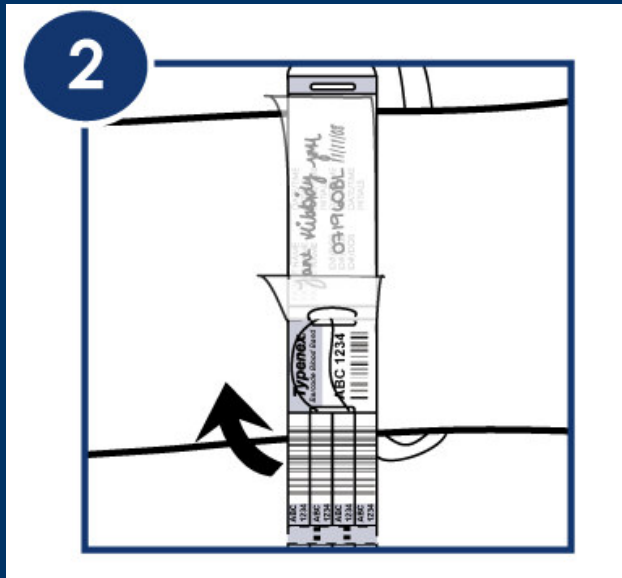
Handwriting Version

Step 1



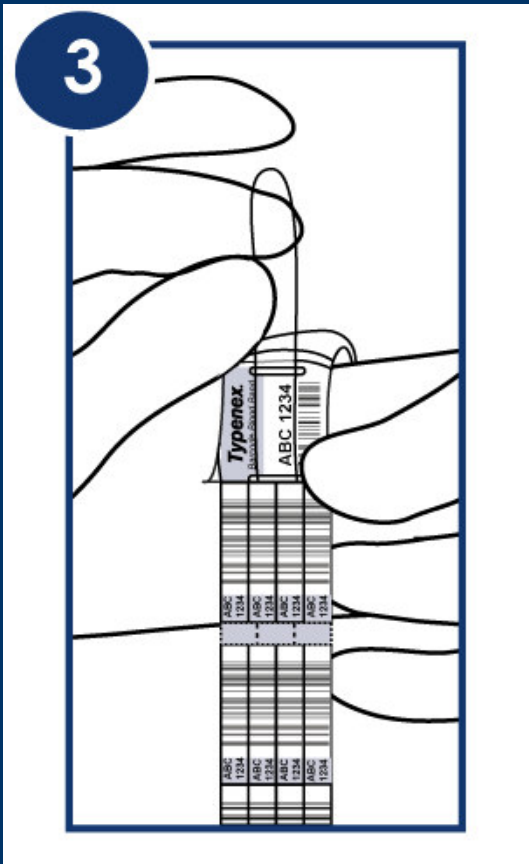
- **VERIFY** the patient identity
- **WRITE** the patient information **OVER** the prompts on the band, under the protective shield, using a ballpoint pen
- *Do not adhere protective shield over the handwritten patient information at this point **(Step 6)**

Step 2



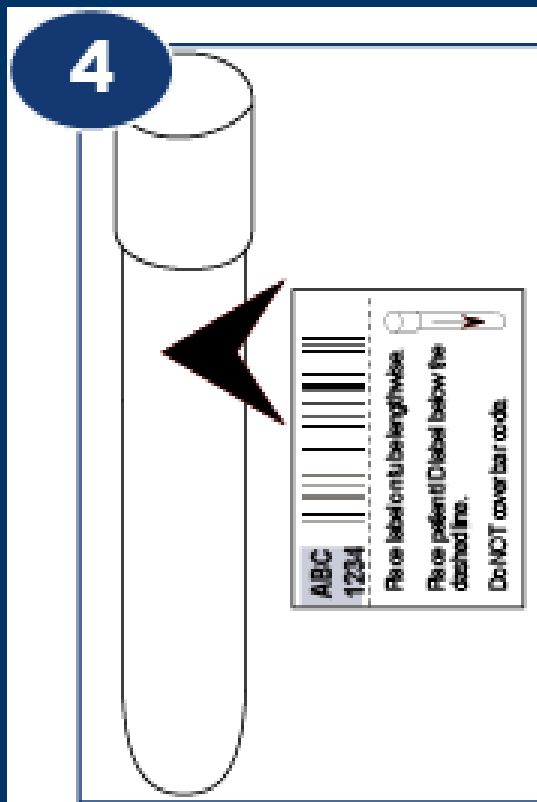
- **PLACE** the patient information area of the BBID band over the wrist or ankle
- **WRAP** the clear tail around and up through the first closure slot (left of the permanent sticker)
- **HOLD** the small closure shield up

Step 3



- **PULL** the clear tail across the permanent sticker
- **PUSH** it through the second closure slot in the small closure shield
- **PEEL** the liner from the small closure shield and stick it down, covering the clear tail and the permanent sticker
- **TUCK** the excess into slot

Step 4



- **DRAW** the patient sample
- **PEEL** the test tube sticker with directions from the BBID band on the patient
- **PLACE** it onto the patient sample tube lengthwise, with the barcode fully exposed

Step 5

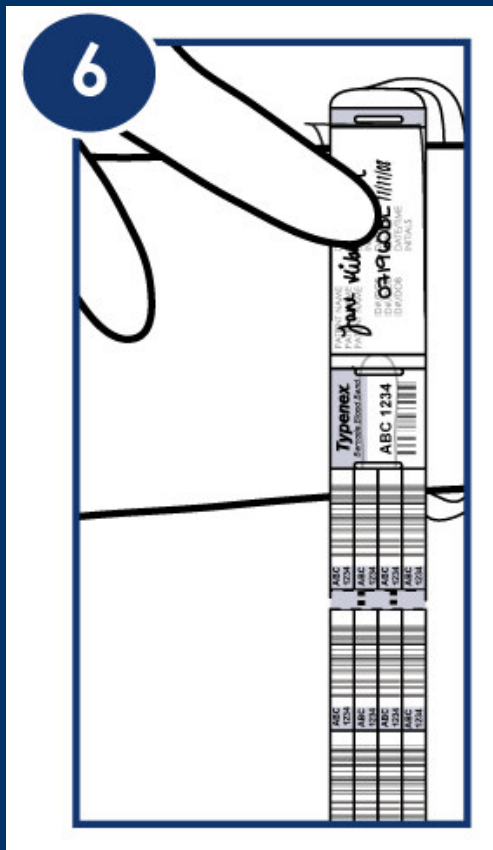


- **PEEL** the handwritten patient information label from the BBID band

- **PLACE** it over the test tube sticker already on the tube

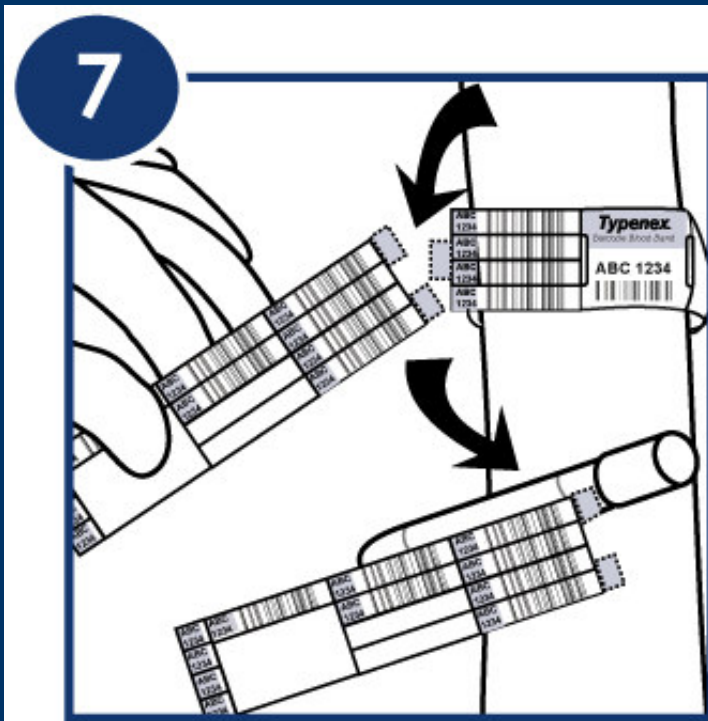
*Overlabel properly, do not cover the barcode on the test tube sticker for easy scanning in the blood bank

Step 6



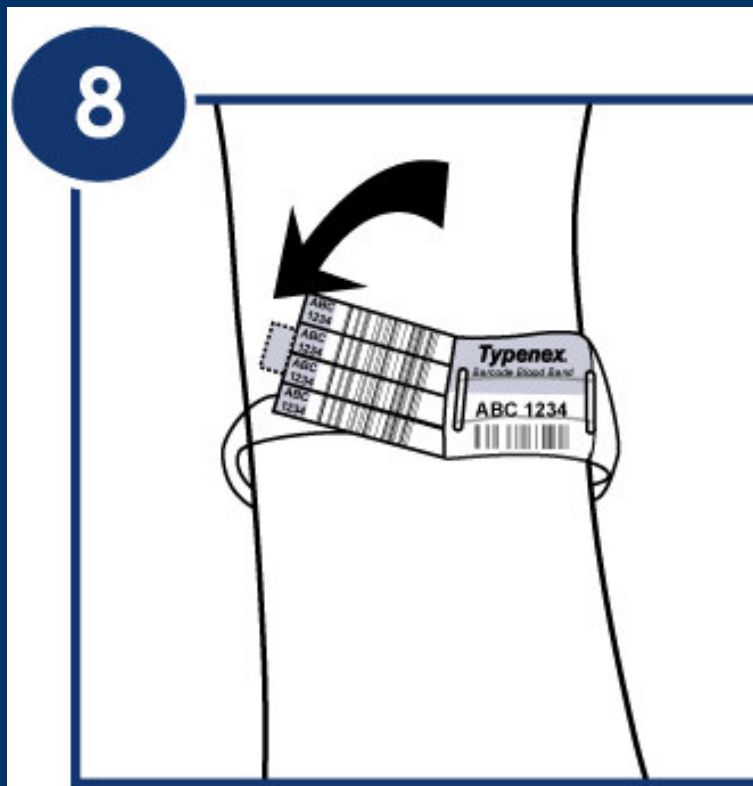
- **PEEL** the liner from the large protective shield
- **COVER** the carbon copy of the patient information area entirely
- **SEAL** the edges down to ensure no bubbles are left

Step 7



- **LABEL** other forms as necessary at the patient bedside, then rip the detachable stickers from the BBID band
- **ATTACH** the strip to the patient sample tube using one or both of the colored adhesive tabs
- **TRANSPORT** to blood bank

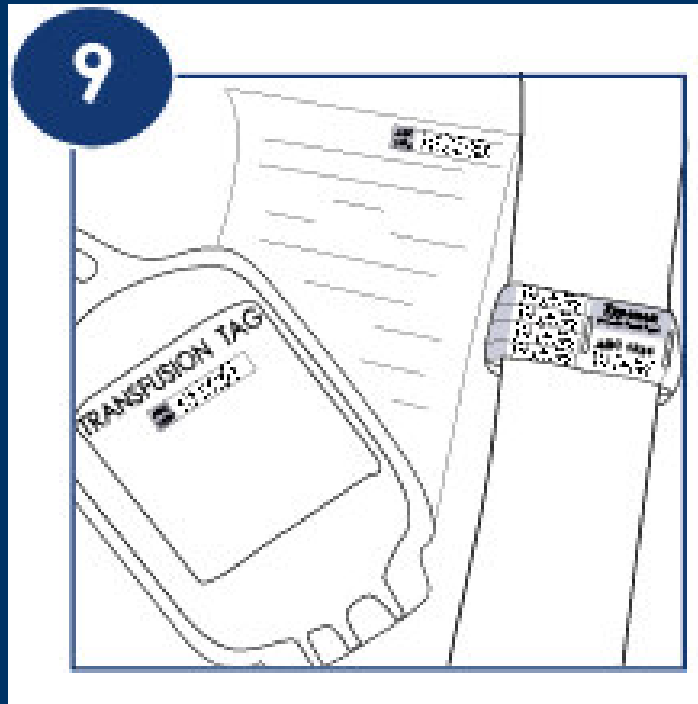
Step 8



- **SECURE** the free end of the 4 removable barcode stickers to the BBID band with the colored adhesive tab

*If your facility prefers not to use the removable stickers on the patient: **CUT** them off, leaving the closure slots intact

Step 9



- **CONFIRM** the recipient identity
- **ENSURE** that the following are matching before transfusing:
 - BBID band unique code
 - BBID unique code on blood bag label/transfusion tag
 - Request for blood
- **PROCEED** with transfusion