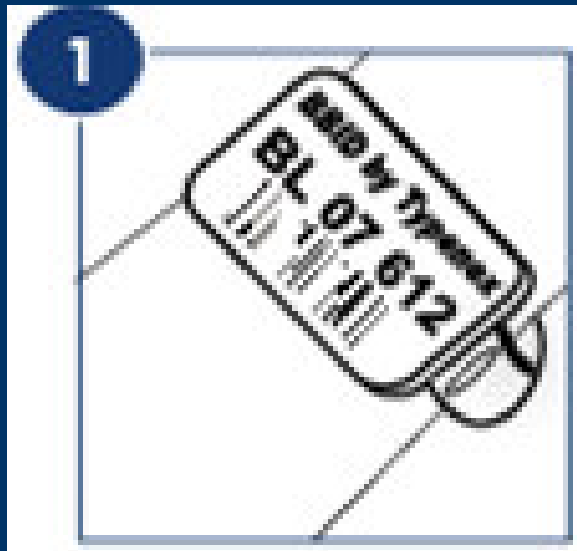


Typenex Medical

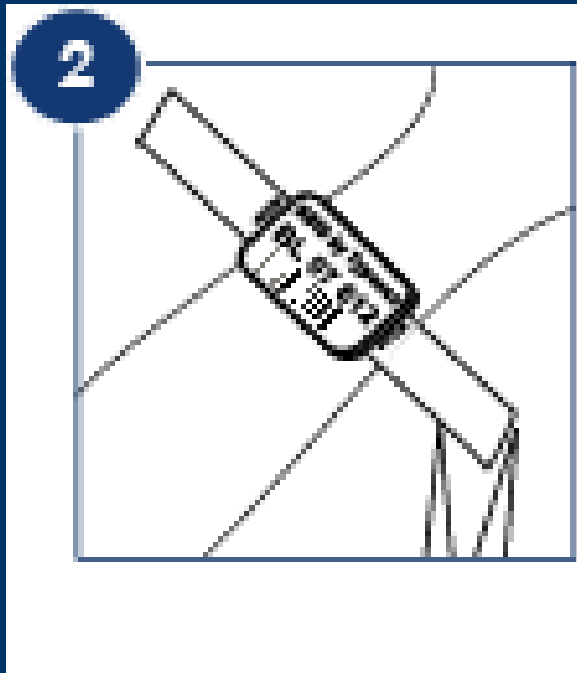
R3 Attachment System
Training Guide

Step 1



- **OBTAIN** and R3 band and a pair of scissors
 - **VERIFY** that the BBID band is attached to the patient
-

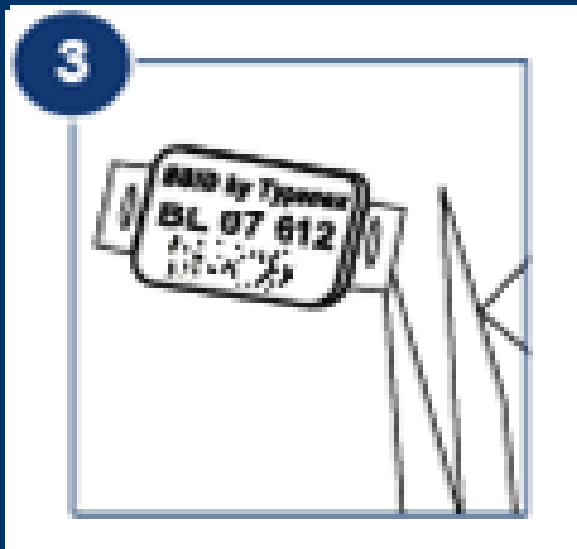
Step 2



- **CUT** the BBID band off of the patient, leaving all the openings intact

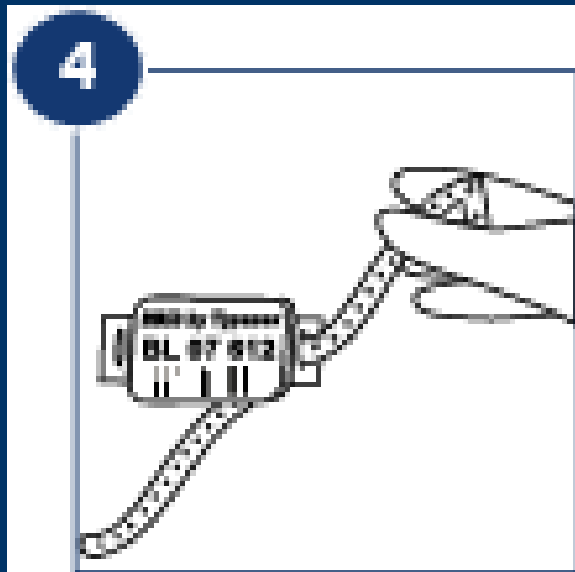
*For surgical patients, **HOLD** the BBID band at the bedside until the end of the procedure

Step 3



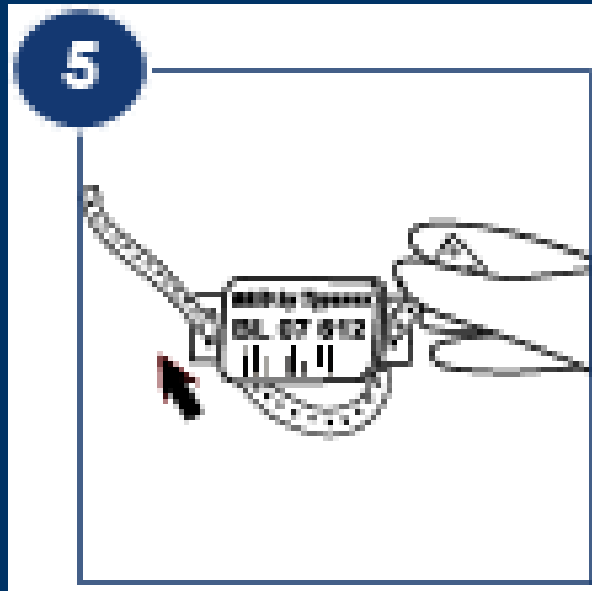
- **TRIM** the excess BBID band material, leaving all the openings and permanent information intact.
-

Step 4



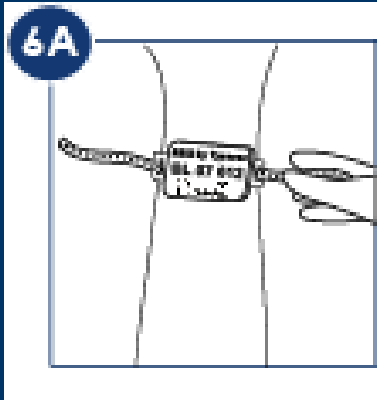
- **HOLD** the snap closure nearest to you
- **INSERT** the free end of the R3 band into one opening

Step 5



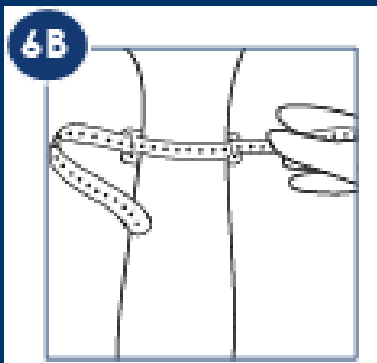
- **PULL** the R3 band through the opening and across the underside of the trimmed BBID band
 - **INSERT** the free end of the R3 band up through the other opening
 - **CENTER** the trimmed BBID band on the R3 band
-

Step 6



Option A

- **WRAP** the band around patient extremity to fit
- **SECURE** onto patient with the snap closure



Option B

- **INSERT** the patient's extremity in between the trimmed BBID band and the R3 band, pull to size
- **SECURE** onto patient with the snap closure